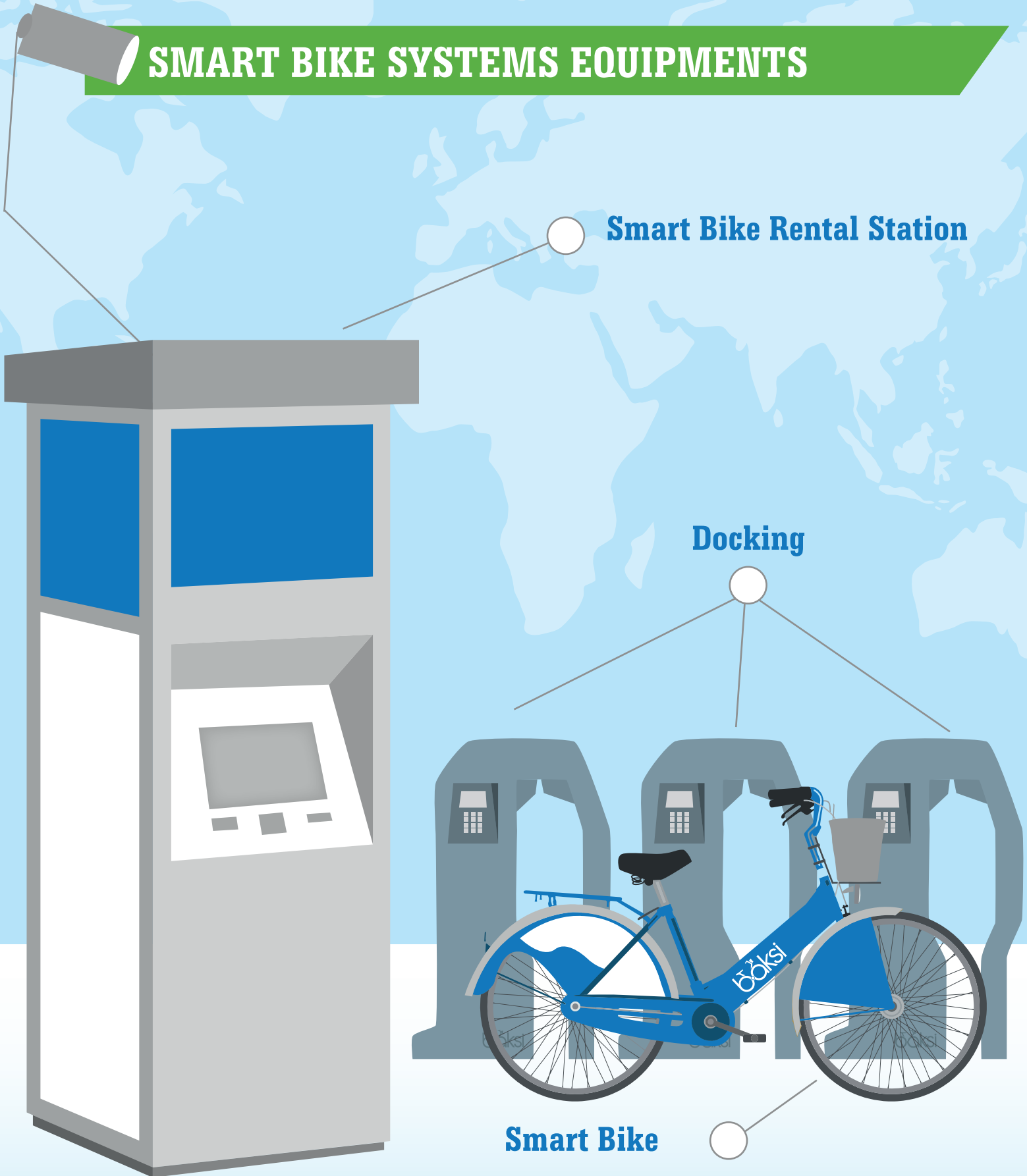


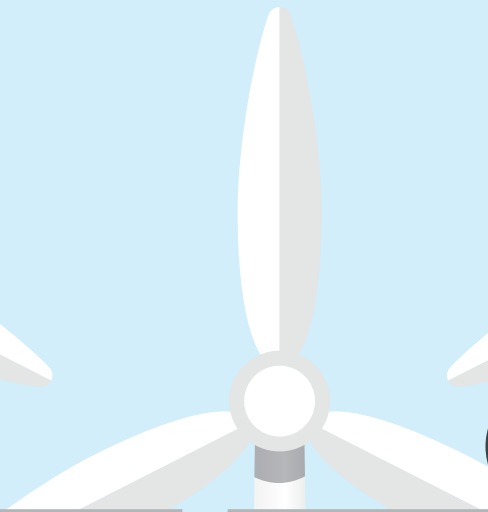
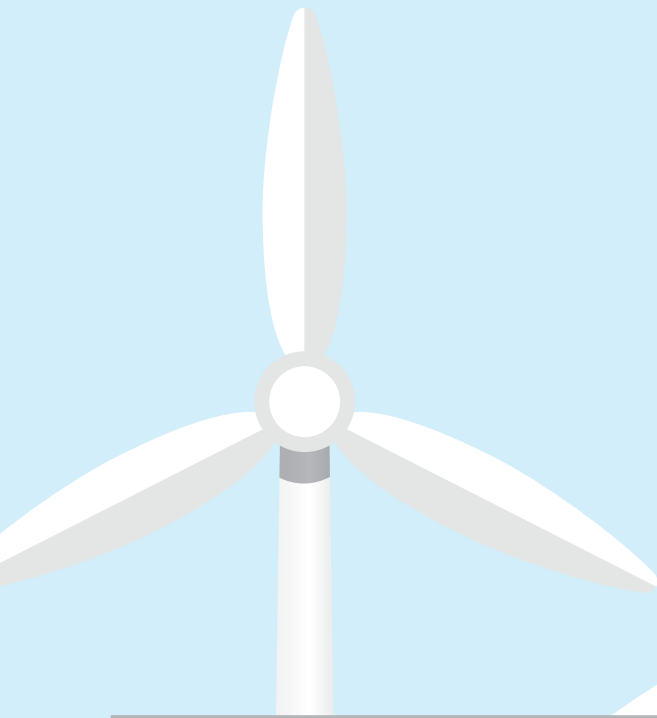
SMART BIKE SYSTEMS EQUIPMENTS

Smart Bike Rental Station

Docking

Smart Bike





**Traffic Problems and
Use of Bicycles in Turkey**



Bicycle Use in Europe

2

4



böksi

What is Baksi?

6



Equipments

8



ANTALYA
BÜYÜKŞEHİR
BELEDİYESİ



İZMİR
BÜYÜKŞEHİR
BELEDİYESİ



KOCAELİ
BÜYÜKŞEHİR BELEDİYESİ

References

10



Traffic Problem in Turkey and Use of Bicycle

“ Traffic is a major problem in Turkey just as in all other developing or developed countries. In addition to the rapid increase in the number of driver and motor vehicles, the need for easy transportation emerged with industrialization, lack of resources and uncoordinated applications cause more harm than good in terms of motor vehicles. ”

Traffic issue has become a major problem which should be solved with priority due to the insufficiency of traffic infrastructure and public awareness among traffic despite the 90% of the cargo and passenger transport is carried out through our urban and long distance highways.

This problem is not a specific issue for a part of our society; it concerns the whole society with its individuals and institutions. Despite the fact that road accident reminding itself every day and targeting everyone without exception goes beyond the identification of accident by its causes, it is not adequately discussed in public.

“ Cycling is not preferred widely as a sport and transport vehicle in Turkey. More precisely, the ratio for use of bicycle is quite low and changes city to city or even neighborhood to neighborhood. The use of bicycles is expressed with such low ratio as 5% in Turkey. ”

If we mention the reasons for this case, the first reasons can be listed as follows; the cities that we live in designed and built in a way that bringing the use of motor vehicles forward and the same trend is maintained for further investments planned to be made on city infrastructures.

Besides the infrastructure issues such as the absence of specific roads for cyclists, no bicycle transport chance with the public transportation vehicles, absence of parking area for bicycles, the behavioral habits of individuals are also one of the most common reasons restricting the use of bicycles. While the very first urban transport option that comes to mind is automobile, the place of bicycle in our everyday life cannot go beyond being a report card gift for our children.

Besides bicycles are not a widely used as a transport vehicle in cities, bicycle use as a sport and hobby purpose is not at the sufficient level. Although it is possible to run away from the chaos of the cities to spend time in green and refreshing areas and cycling in the nature, people living in cities still prefer concrete buildings to spend their spare time and stay indoors.





Bicycle use in Europe

“ People of ages from women to men use bicycle in Europe. Along the way, you see that the traffic flow is not only designed for motor vehicles but also for bicycles. ”

The bicycle drawings on the road indicate that this part of the road is for cyclists. Traffic lights, road and sidewalk planning are laid out in the same way. You see how pedestrians and motor vehicle drivers adopted the bicycle as transport vehicle. A motor vehicle driver does not ask a biker "what are you doing here?" by staring out of the car window and using its gestures in Europe. Because he/she knows that a biker has also right to use the same road.

Segments using bicycles as transportation means generally consist of lower income groups (especially the men of this group) or university students. Special infrastructures should be set up for extending the use of bicycle for sure. If you ride bicycle with the existing transportation infrastructure without customized systems, you need to consider some difficulties beforehand.

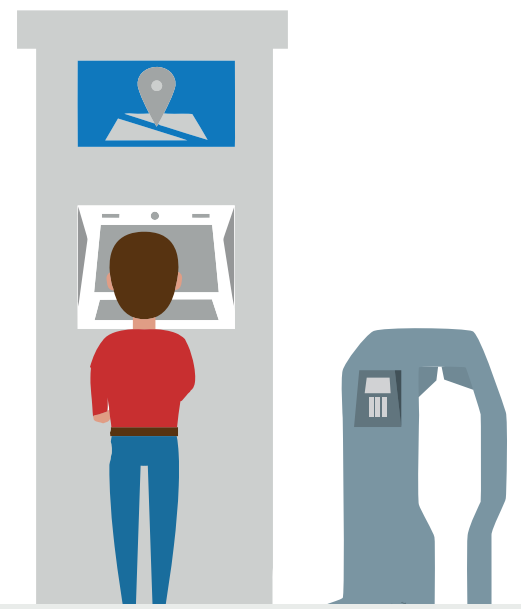
Let's check out Turkey. It is indicated that approximately one million bicycles are sold each year. If we consider the population of 75 million, it is obvious that this rate is very low. In our country, bicycle is widely considered as an entertainment means for children rather than a transport vehicle and it is perceived as it should be ridden in alleyways or parks or roads closed to traffic.

“ A total of 18 million and 450 thousand bicycles are sold annually in Europe. While this rate is 4.5 million in Germany and it is only 1.3 million in Turkey. Netherlands holds the high ground in Europe for the use of bicycle. 16.5 million bicycles are used in the country with a population of 16.6 million. In direct proportion to this situation, the country making the highest investments on bicycle is Nederland. Benelux bicycle tunnel is one of the best investments in this direction. Netherlands use bicycles for the 27% of its transportation. This figure reaches 60% in the municipal areas. ”



WHAT IS BAKSI ?

Is the most practical way for striving to catch flowing time in today's metropolitan areas. Many big cities now prefer to bike as an alternative transport system. Ensuring the control mechanism of bike system is realized by Baksi in the city. Baksi is sustainable bike sharing system. That is to say, management of bike network is done by Baksi. Circulation of bikes in cities, the bike stops and time of driving are controlled by digital information system that is provide by Baksi.



Baksi in Turkey and in the World

London, Barcelona and Milan are cities where usage of bicycles is quite common. Long accustomed to this system for many years in these cities, bicycles are controlled by kiosks. Thanks to this system, which may be described as digital control system, all the movements and circulation of the bicycles are controlled. In Turkey and neighbor country Azerbaijan, the bicycle system has been launched and it is heavily used.

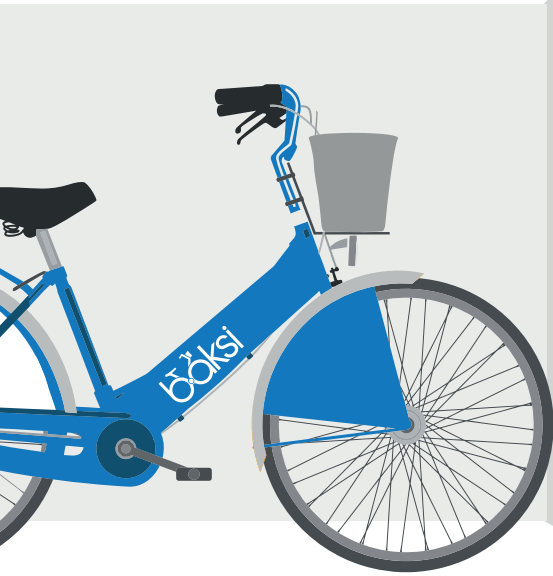
Firstly, 160 parking, 10 stations and 111 bikes tender was awarded by İstanbul Fatih Municipality to our company and successfully competed.

The bicycle system is highly demanded in cities where major universities are located. In Istanbul, between Kartal and Kadıköy, 6 station, 70 park and 40 bicycles were set up and there are over 60.000 times bicycles were rented.

In its second year of the first system, Istanbul Metropolitan Municipality has awarded 6 station, 70 park and 40 bikes in Florya coast line and the system became operational. In Eskişehir, one of the biggest cities in Turkey, a smart bicycle system was set up and waiting to be operational in a short time. The system consists of 150 parks, 10 stations and 120 bikes. In Ganja, Azerbaijan, bicycle system with 5 station, 75 parks and 50 bicycles were set up and put in operation in 2014.

Why Baksi?

Baksi aims to be an alternative transportation system for cities and provides a solution to traffic problems experienced in cities. Being a new trend to be a solution for traffic problems and pollution in big cities in Europe and Turkey, Baksi creates a transportation systems friendly with environment. Being an integrated system with other transportation systems, Baksi brings both carrier and transfer oriented transportation system.



Baksi as Mobile Advertisement Element

For the first time, this service is completely shaped and developed by a Turkish company and goes beyond the traditional advertising approach. All bikes are managed by the Baksi, will also be used as advertisement element. Baksi will provide the opportunity to public your advertisements as moving elements instead of stable locations by this way all your advertisements will be caught and memorized by your customer groups.

Baksi as Advertising Practice

In addition to bringing an alternative solution to the city's public transportation system, Baksi is used as street furniture system, due to it takes up space in the cities. Since the advertisements in Baksi are both mobile and stable, it brings a new approach to outdoor advertising.



BAKSI GENEL TANIM

'Sustainable Smart Bike Sharing System'

Smart Bike Rental Station

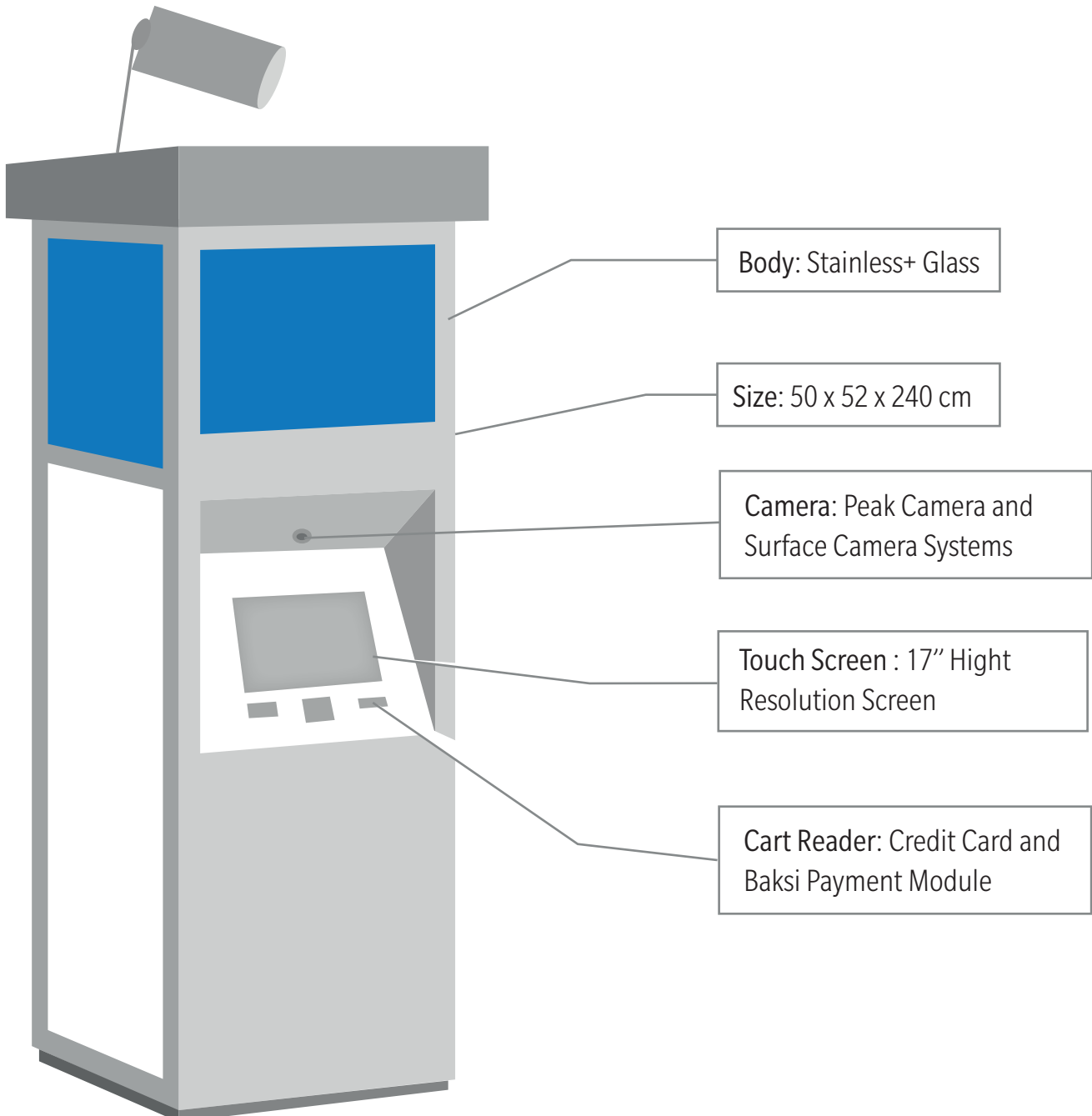
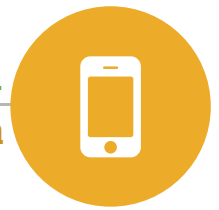
They are units ensuring that smart bikes are rented by using credit card and city transportation cards, integrated with industrial computer, with touch-screen, constant connection with the central computer system, management of smart bikes, parking areas and the users.



**Manageable Control
Mechanism**



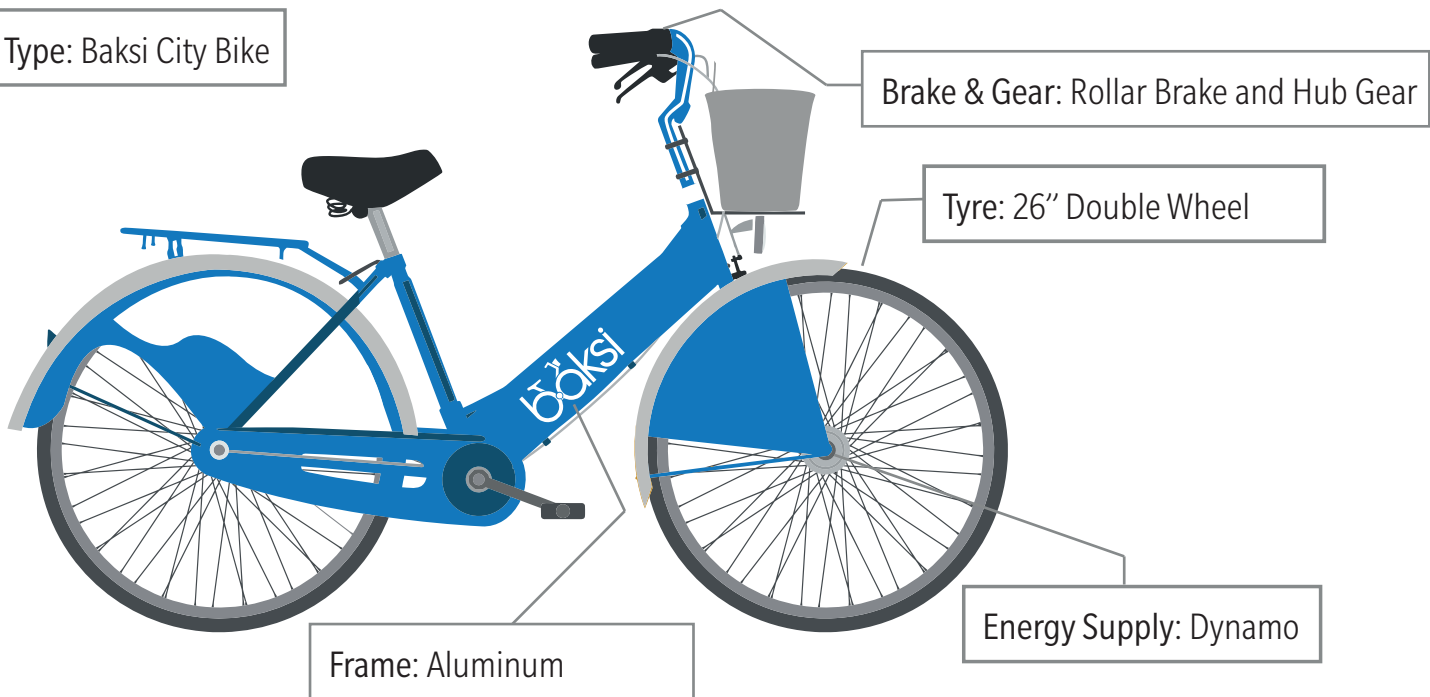
**Baksi Management Panel
Baksi Mobil Application**



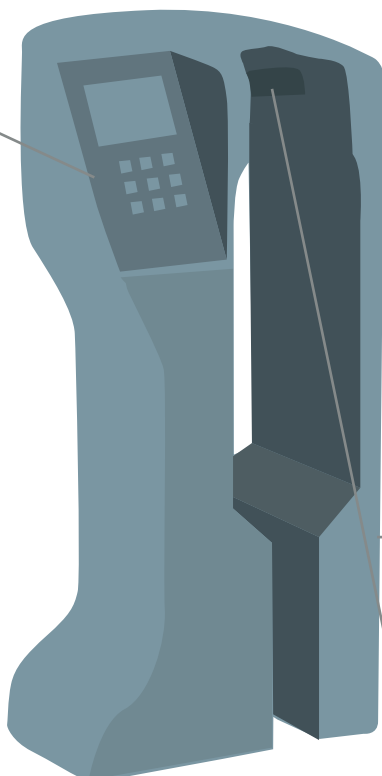
Smart Bike

They are smart bikes with a defined separate identification number of each bike, rechargeable, capable of communicating with the control software continuously and able to perform instant tracking.

Type: Baksi City Bike



Type: Baksi Smart Lock



Docking

It is a device ensuring the recognition of identities of the bikes, giving the bikes to the users, ensuring them to be locked by taking from the user, being placed bikes connecting to the Smart bikes rental terminal

Size: 80 x 35 x 40 cm

Body: Aluminum

Lock

Is the most practical way for striving to catch flowing time in today's metropolitan areas. Many big cities now prefer to bike as an alternative transport system. Ensuring the control mechanism of bike system is realized by Baksi in the city. Baksi is sustainable bike sharing system. That is to say, management of bike network is done by Baksi. Circulation of bikes in cities, the bike stops and time of driving are controlled by digital information system that is provide by Baksi.

Baksi Station Modul

- ✓ Turkish-English Language Options
- ✓ Optional Multi Language
- ✓ Rent Bike with Subscribe Card
- ✓ Rent Bike with Credit Card
- ✓ New Subscriptions
- ✓ Receiving Subscribe Card
- ✓ Abone Karta Kredi Yükleme
- ✓ Informing,Announcements
- ✓ Arıza Bildirimi ve Talep

⚠ Emergency Warning

- ✓ Station Max. Bike Notification
- ✓ Station Min. Bike Notification
- ✓ Station Disconnection Notifications
- ✓ Docking Warning Notifications
- ✓ Emergency Warning For Users
- ✓ Fault Notifications

Baksi Managment Panel

- | | |
|------------------------------|-----------------------------------|
| ✓ New Subscription Module | ✓ Credit Card Provisioning Report |
| ✓ Credit Installation Module | ✓ Sales Reports With Credit Card |
| ✓ Kiosk Management | ✓ Turnover Usage Reports |
| ✓ Docking Management | ✓ Station Density Report |
| ✓ Bike Managment | ✓ Voyages Between Station Report |
| ✓ Bike Tracking Module | ✓ Z Report |
| ✓ GPS Managment | ✓ Event Notification |
| ✓ Fee Schedule Module | ✓ Support |
| ✓ Payment Type Module | |

Bike Tracking



Permanent position as instant tracking devices located on the bike, speed, sends dynamo charging information. You can follow the bike through the administration panel Baksi; You can prevent problems such as getting lost and stolen.

References

Completed Projects

Project : 10 Smart Bike Rental Station
150 Docking
İsbike 100 Smart Bike





İZMİR
BÜYÜKŞEHİR
BELEDİYESİ

Project :

Bisim

29

439

311

Smart Bike Rental Station

Docking

Smart Bike



Project :

Kobis

15 Smart Bike Rental Station
 180 Docking
 120 Smart Bike





**ANTALYA
BÜYÜKŞEHİR
BELEDİYESİ**

Project : 6 Smart Bike Rental Station
40 Docking
Antbis 40 Smart Bike



Project :

Esbis

10 Smart Bike Rental Station
150 Docking
120 Smart Bike





TC Sağlık Bakanlığı
Türkiye Halk Sağlığı
Kurumu

Project :

Halk Sağlığı

1	Smart Bike Rental Station
18	Docking
18	Smart Bike





Project : 5 Smart Bike Rental Station
75 Docking
Ganjabike 60 Smart Bike



Media

PRESS

Urban Agenda

11:12:2015

NEW BICYCLES OF IZMIR WILL TAKE THE ROAD



Opening of system that was established by IZMIR Metropolitan Municipality and will provide opportunity of healthy and antipollutionist transportation with rental bicycles along 40 km coastline will be made on January 18, Saturday. Motto of system that will be called as "BISIM" shortly will be "Roads are BISIM anymore."

Countdown has started anymore for "Bicycle City Izmir(Bisiklet Kenti İzmir)" project that is carried out by Izmir Metropolitan Municipality on purpose of popularizing urban use of healthy and antipollutionist means of transportation bicycle. Installation of private park places and kiosk to provide bicycle rent system in route between Mavişehir and Inciraltı dormitories is completed. First stage's opening including district between Inciraltı-Alsancak will be made on January 18, Saturday.

Üçkuyular Pier and Passport Stations on route including total 15 station will come into service after completing on-going coast regulation works. Bicycle fun of Izmir public will be shared till Mavişehir after approximately 1 month including 29 stations.

311 BICYCLES ARE READY

Izmir Metropolitan Municipality Institution named system to be operated by IZULAŞ A.S. as BISIM shortly. System that will service with "Roads are ours anymore (Yollar artık BISIM)" motto includes 311 bicycles, 29 Bicycle renting station and 439 exclusively locked parking space. Bicycle roads in coast line will make integration

ISTANBUL BIKE Electric bicycles are also added to bicycles

Project that was started on purpose of popularizing riding bicycle for transportation in every part of city is especially applied on coast line. A new system will be used to popularize riding bicycle



Project that was put into service on Kadıköy-Kartal, Florya-Yeşilköy coast line will provide new routes to be opened in city by enabling electric bicycles. Works were started to popularize electric bicycle use in historical peninsula particularly. Electric bicycles with specifications to be used by citizens in every age group will be a new alternative for transportation. ISPARK expedited works to put electric bicycles in use those are applicable for every age group means of travelling more and climbing over steeps. Some examples that apply this system in cities in world particularly Kopenhagen was examined closely.

SMART BIKE IS INTRODUCED TO ESKISEHIR



ESBIS, Eskisehir Smart Bicycle Project, that is one of the ground breaking service of Odunpazarı Municipality has been introduced to Eskisehir.

Burhan Sakallı, Mayor of Odunpazarı, made a short speech at the ceremony and said that they dedicated the system which was formed under municipality and will provide a healthy and green transport facility with bike rent in an area of 25 kilometers. "We adopted the "City of Bicycle: Eskişehir Project" realized by Eskisehir Odunpazarı Municipality in order to promote the urban use of bicycle which is a healthy and environmentalist transport vehicle. Odunpazarı Municipality completed its land use plan in the route including total of 10 stations and 150 park areas will serve the citizens with 120 smart bicycles," Sakallı said.

Thank you plaques were given to persons and organizations supporting to this project. Afterwards, Burhan Sakallı, Mayor of Odunpazarı, Mustafa Şahin, Police Commissioner, and deputy mayors rode the smart bikes and toured around the Provincial Area. Councilors, executives of non-governmental organization and a crowded group of citizens participated in the ceremony.

Rental fees will be kept as low as possible in order that people from every walk of life can benefit from the ESBISIM. Bike rental fee is set at TL 2 for first one hour. TL 1 will be paid for next hours. Bicycles can be rent by credit cards at the rental points and with the membership cards in the park areas. When returning the bicycle to station, the price calculated over the ride time will be charged from the credit card. Registered users who subscribed to the system will be able to rent bikes with their subscription cards. With information boards, they will check the available bicycles and empty parking areas.

NEW BICYCLES OF IZMIR WILL TAKE THE ROAD



Opening of system that was established by IZMİR Metropolitan Municipality and will provide opportunity of healthy and antipollutionist transportation with rental bicycles along 40 km coastline will be made on January 18, Saturday. Motto of system that will be called as “BISIM” shortly will be “Roads are BISIM anymore.”

Countdown has started anymore for “Bicycle City Izmir(Bisiklet Kenti İzmir)” project that is carried out by Izmir Metropolitan Municipality on purpose of popularizing urban use of healthy and antipollutionist means of transportation bicycle. Installation of private park places and kiosk to provide bicycle rent system in route between Mavişehir and Inciraltı dormitories is completed. First stage’s opening including district between Inciraltı-Alsancak will be made on January 18, Saturday.

Üçkuyular Pier and Passport Stations on route including total 15 station will come into service after completing on-going coast regulation works. Bicycle fun of Izmir public will be shared till Mavişehir after approximately 1 month including 29 stations.

311 BICYCLES ARE READY

Izmir Metropolitan Municipality Institution named system to be operated by IZULAŞ A.S. as BISIM shortly. System that will service with “Roads are ours anymore (Yollar artık BISIM)” motto includes 311 bicycles, 29 Bicycle renting station and 439 exclusively locked parking space. Bicycle roads in coast line will make integration with public transportation of bicycle users easier by supporting with vertical connection lines. Bicycle users will have continuous transportation along 40 km coast line.

TRAVEL PERIOD WITH SMART BICYCLE...



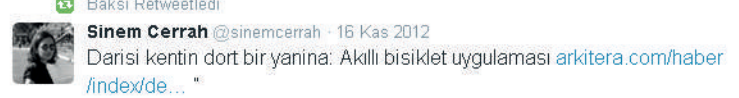
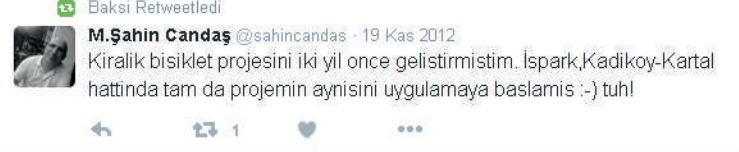
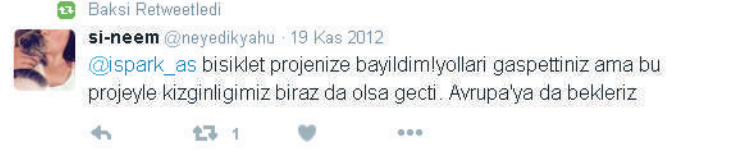
Electric bicycles are also added to bicycles those came into İstanbul public's use by 'Smart Bicycle Project' in every part of city.

Istanbul Metropolitan Municipality Institution IS PARK initiated 'bicycle for everyone' project. Electric bicycles are also added to bicycles those came into İstanbul public's use by 'Smart Bicycle Project' in every part of city.

Project that was started on purpose of popularizing riding bicycle for transportation in every part of city is especially applied on coast line. A new system will be used to popularize riding bicycle depending on city and field structure. Electric bicycles those are preferred because of being quiet and practical will be popularized. Citizens will climb over the hillsides in many routes by bicycle. Furthermore, bicycle roads with longer distances will be come into service and made popularized in every part of city.

Travel at 7(seven) Hills by Bicycle

Project that was put into service on Kadıköy-Kartal, Florya-Yeşilköy coast line will provide new routes to be opened in city by enabling electric bicycles. Works were started to popularize electric bicycle use in historical peninsula particularly. Electric bicycles with specifications to be used by citizens in every age group will be a new alternative for transportation. IS PARK expedited works to put electric bicycles in use those are applicable for every age group by means of travelling more and climbing over steeps. Some examples that apply this system in cities in world particularly Kopenhagen was examined closely.





Sustainable Smart Bike Sharing System

Emirgazi Cad. No:1 Kat:2 D:6 Kağıthane, İstanbul, Türkiye

T: +90 212 282 82 51 F: +90 212 282 82 41

www.baksi.com.tr info@baksi.com.tr



boksi



[/baksi.akilli.bisiklet.sistemleri](https://www.facebook.com/baksi.akilli.bisiklet.sistemleri)



[/baskicity](https://twitter.com/baskicity)



[/baskicity](https://www.instagram.com/baskicity)